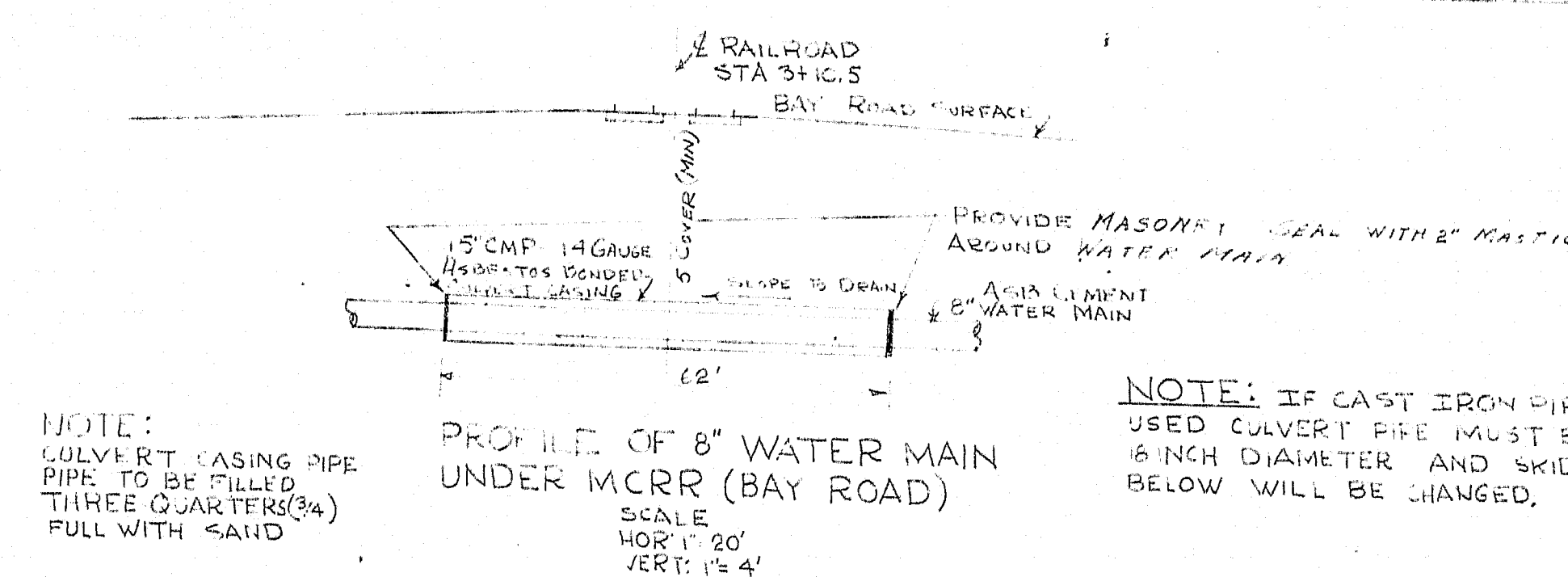
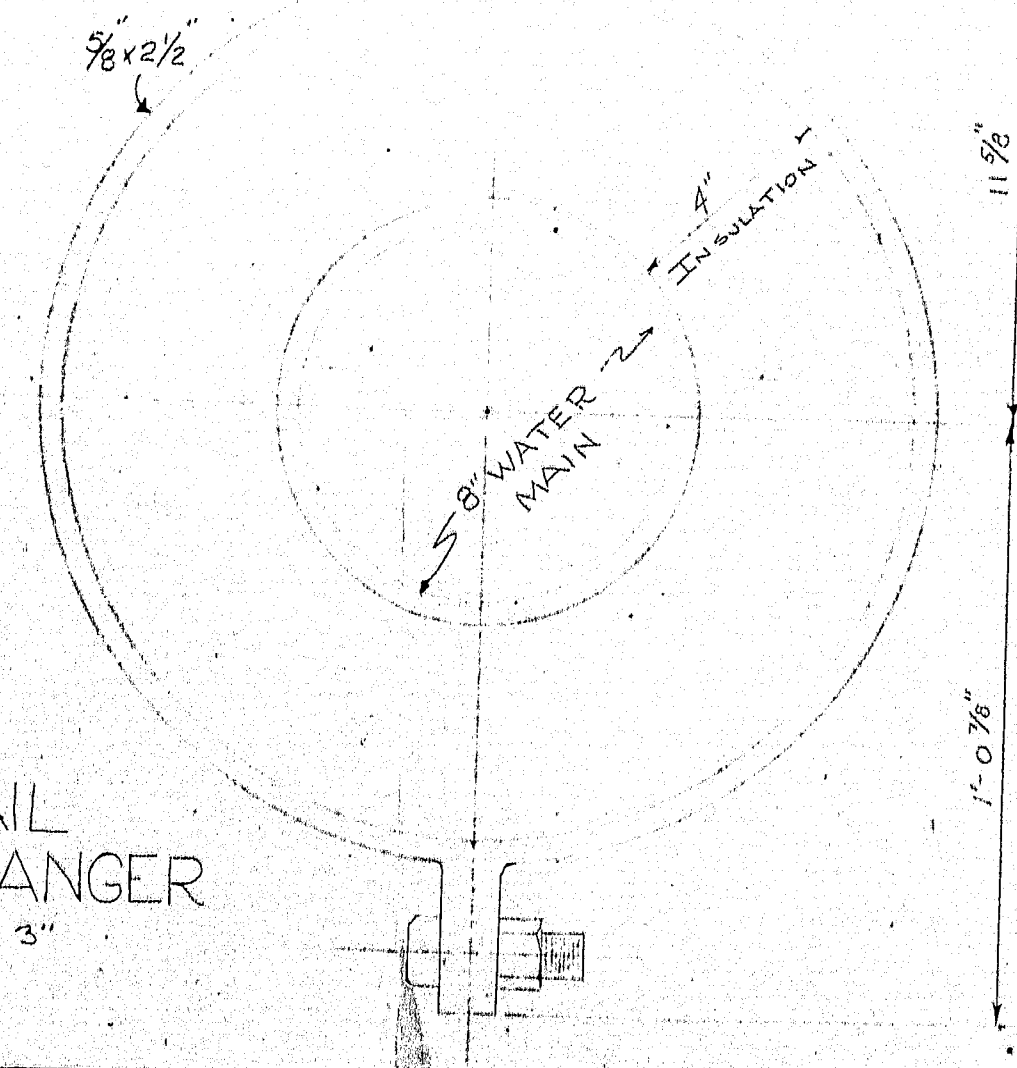
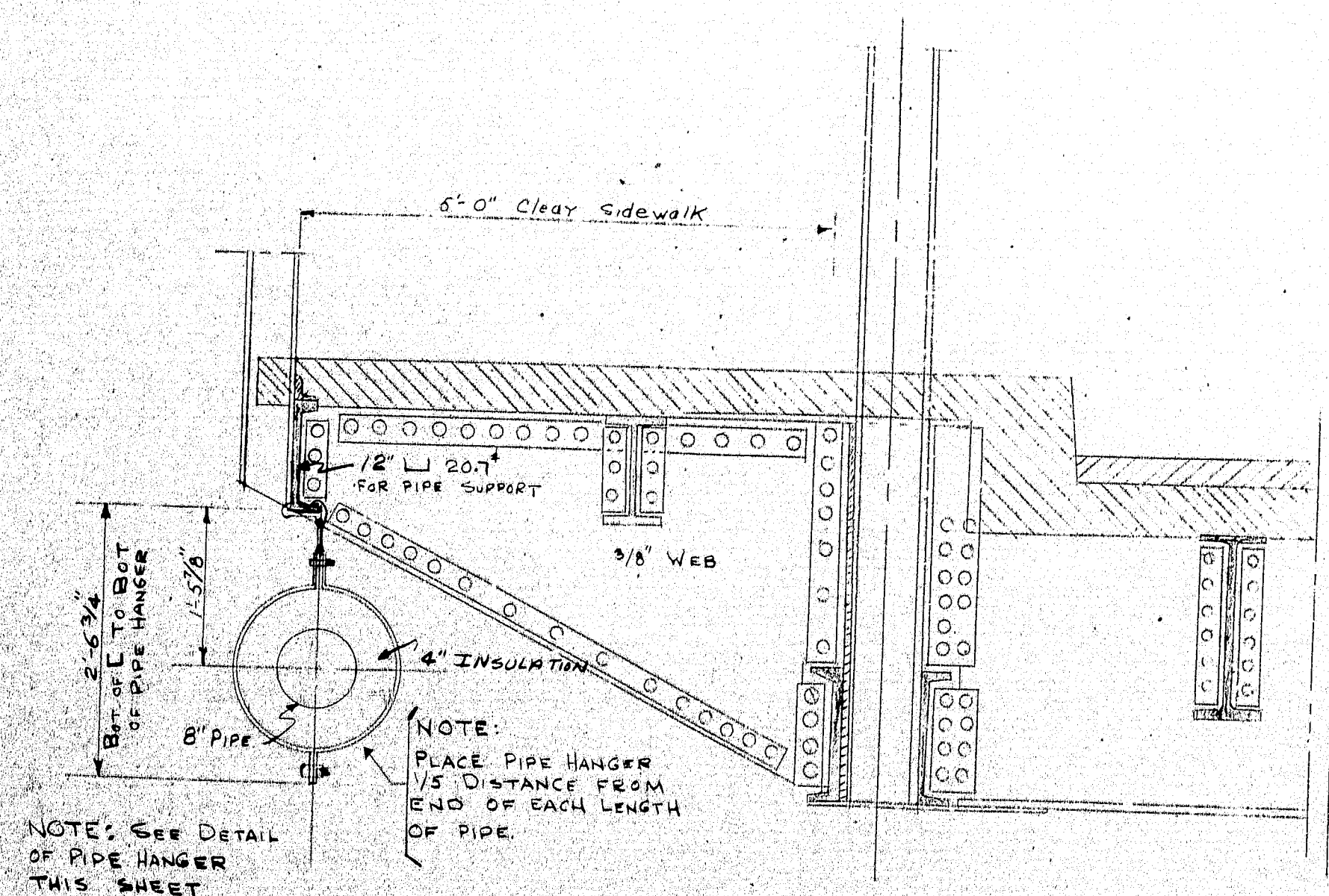
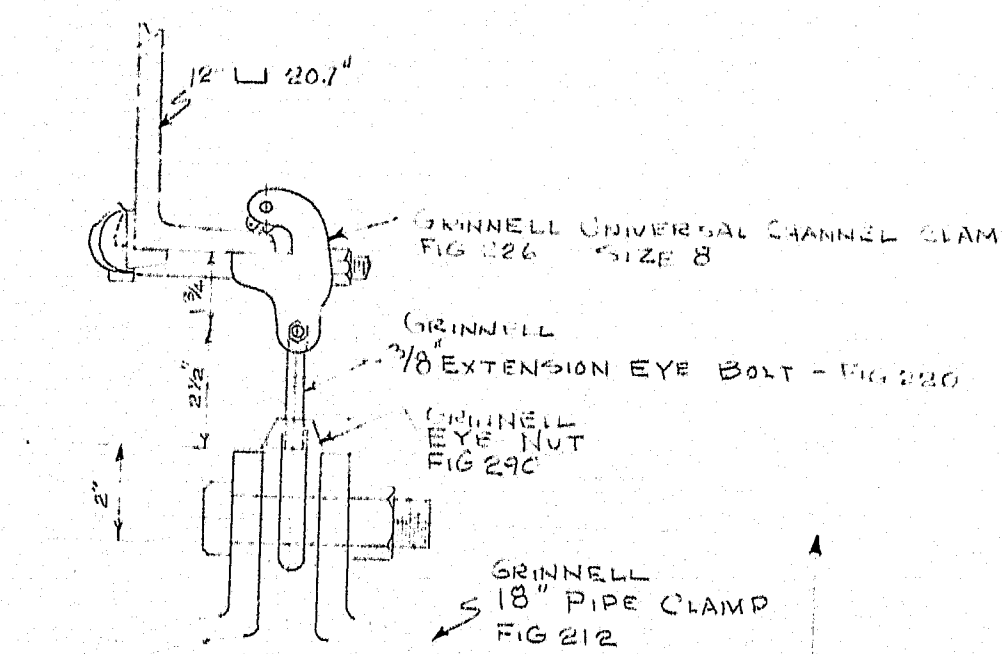


NOTES:

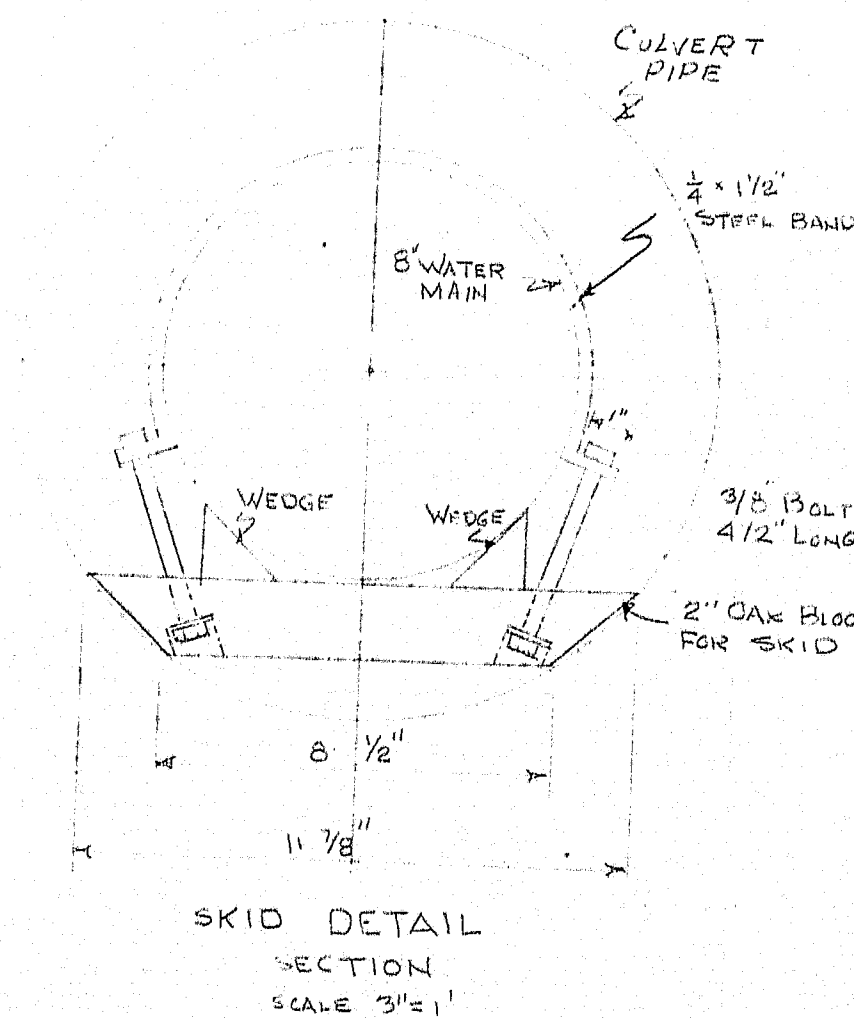
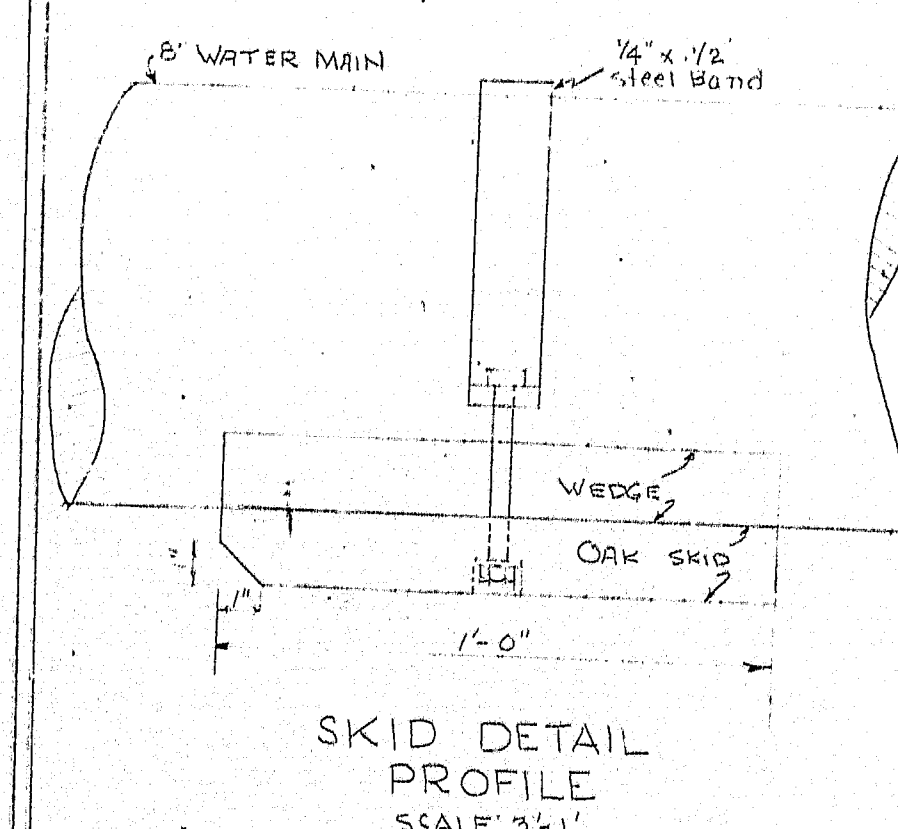
1. Pack space between end wall with oakum & tar
2. Cover Pipe insulation with one thickness of roll roofing (65# or 40# 22#) use 36" roll - one piece on bottom, one piece over top fasten every 3 feet with aluminum bands and clips
3. Insulation shall be 4" thick formed 'S' typeform' as manufactured by Glo-Brite Products, Inc. with Vinyl Jacketing (0.004 thick) applied at factory.

PROFILES BRIDGE APPROACHES



NOTE: CULVERT CASING PIPE TO BE FILLED THREE QUARTERS (3/4) FULL WITH SAND

NOTE: IF CAST IRON PIPE IS USED CULVERT PIPE MUST BE 8" INCH DIAMETER AND SKID DETAIL BELOW WILL BE CHANGED.



BROOKLYN BRIDGE AND MCRR DETAILS		
BOWDOINHAM WATER DISTRICT BOWDOINHAM, MAINE		
SCALE AS SHOWN	DALE E. CARUTHERS CIVIL & SANITARY ENGINEER GORHAM, MAINE	JOB 28-588
DATE 2 20 59		SHEET 7